



FIND A GRAVE



Actions

[Begin New Search](#)
[Refine Last Search](#)
[Cemetery Lookup](#)
[Add Burial Records](#)
[Help with Find A Grave](#)

Find all **Knapkes** in:

- [Saint Henry's Church Cemetery](#)
- [Saint Henry](#)
- [Mercer County](#)
- [Ohio](#)
- [Find A Grave](#)

[Top Contributors](#)
[Success Stories](#)
[Discussion Forums](#)
[Find A Grave Store](#)

[Log In](#)



Advertisement

Virginia L "Ginny" Dues Knapke

Memorial Photos Flowers

Share Edit

[Learn about upgrading this memorial...](#)

Birth: Jul. 1, 1936
 Celina
 Mercer County
 Ohio, USA
Death: Oct. 19, 2013
 Van Wert
 Van Wert County
 Ohio, USA

Ginny, 77, St. Henry, died at Van Wert Hospice Center.

She was the daughter of Raymond and Josephine (Heyne) Dues. On Oct 6, 1954, in Carthagena, she married Alfred Knapke, who preceded her in death.

Surviving are four sons: Tom (Kathy), Rockville, IN, Mike (Marilyn), Portland, IN, John (Doreen), Kettering, and Mark (Amy), Coldwater; two brothers: Robert (Joan), Houston, and Donald (Linda), Coldwater; four daughters: Alice (Roger) Klosterman, FL, Viola (Arnold) Westgerdes, Ft. Recovery, Mary Jane Severt, Traverse City, MI, and Patricia (Greg) Myers of Adrian, MI; a sister-in-law, Janet Dues, Portland; and twelve grandchildren and two great-grandchildren.

Deceased is a brother, James.

She was a member of St. Henry Catholic Church, the Ladies rosary altar sodality of the church and the Coldwater Eagles Auxiliary. She formerly worked at the Spiritual Center, Maria Stein, and volunteered at the church and Briarwood Manor.

A Mass of Christian Burial will be at St. Henry Church.

Family links:

Parents:
 Raymond B Dues (1909 - 2001)
 Josephine Mary Heyne Dues (1908 - 2004)

Spouse:
 Alfred Knapke (1933 - 1996)

Sibling:
 Virginia L Dues Knapke (1936 - 2013)
 James C Dues (1947 - 2009)*

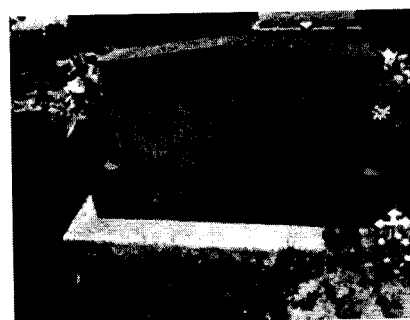
*Calculated relationship

Burial:
[Saint Henry's Church Cemetery](#)
 Saint Henry
 Mercer County
 Ohio, USA
 Plot: Sec D Row 4 Lot 6

Created by: [Mike Dearbaugh](#)



Added by: [Mike Dearbaugh](#)



Added by: [DSO1492](#)

Add a photo
for this person

Request
A Photo

Photos may be scaled.
Click on image for full size.

Leave flowers
and a note