

FIND A GRAVE



Actions

[Begin New Search](#)
[Refine Last Search](#)
[Cemetery Lookup](#)
[Add Burial Records](#)
[Help with Find A Grave](#)

Find all Bertkes in:

- [Saint Marys Catholic Cemetery](#)
- [Celina](#)
- [Mercer County](#)
- [Ohio](#)
- [Find A Grave](#)

[Top Contributors](#)[Success Stories](#)[Discussion Forums](#)[Find A Grave Store](#)[Support Find A Grave](#)[Log In](#)

Sponsor This
Memorial!

[Click Here](#)

Advertisement

Cyril Edwin "Cy" Bertke

Memorial

Photos

Flowers

[Edit](#)[Learn about sponsoring this memorial...](#)

Birth: Jun. 16, 1917
 Cassella
 Mercer County
 Ohio, USA
 Death: Jan. 9, 2008
 Saint Marys
 Auglaize County
 Ohio, USA

Cy, 90, formerly of Zillah St. in Celina passed away at 5:00 p.m., at the Otterbein Home.

He was born to Leo and Anna (Lindhaus) Bertke. On Oct 4, 1949, he married Dorothy Dahlinghaus, who he survived.

Surviving are a son, Don, Dayton; two daughters, Sharon (Mike) Lhamon, Saint Marys and Denise (Phil) Keegan, Middletown; three brothers, Wilbur (Anna Marie), St. Henry, Louis (Evelyn), Cassella, Ernest (Rita), Centerville; a sister, Norma (Norb) Otting, Minster; four grandchildren, Andy & Beth Lhamon & Katie & Brian Vanderhorst, Alex & Sam Keegan; and one great-grandchild, Jacob Lhamon.

Deceased are three brothers, Leander 'Charlie' (Alvera), Marinus and Dennis Bertke; two sisters, Mary Ann Bertke, and Euleta (Werner) Bensman.

He went to St. Henry High School, he was in the U.S. Army Air Corp. during WWII and served in Africa and Italy. He was a Band Saw operator for 40 years at Mersman Brother in Celina, where he retired from in 1982. He was a member of the Immaculate Conception Catholic Church in Celina and the Holy Name Society of the Immaculate Conception Catholic Church. He was a member of the Catholic Knights of America Council # 943 of Cassella. He was a member of the Celina V.F.W. Post #5713.

Family links:

Parents:

Leo Bernard Bertke (1889 - 1973)
 Anna Josephine Lindhaus Bertke (1892 - 1960)

Spouse:

Dorothy E Dahlinghaus Bertke (1923 - 2004)

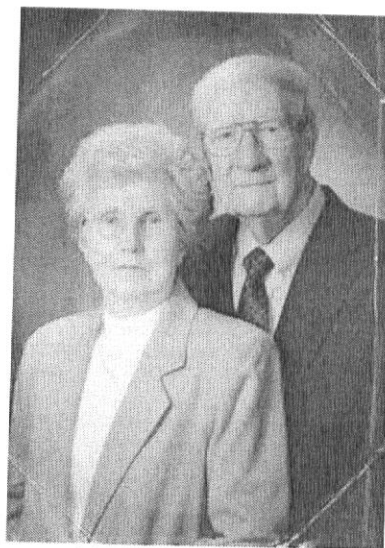
Children:

Donald H Bertke (1955 - 2008)*

*[Point here for explanation](#)

Burial:

[Saint Marys Catholic Cemetery](#)
 Celina

Added by: [Mike Dearbaugh](#)Added by: [tut](#)Added by: [tut](#)

Add a photo
for this person

Request
A Photo

There is 1 more photo not showing...
[Click here to view all images...](#)